

MONTHLY MEMBERSHIP PROGRESS REPORT

District 32 S

Results as of: 4/30/2024

GMT:

LOCATION SOUTH CAROLINA

GMT CA

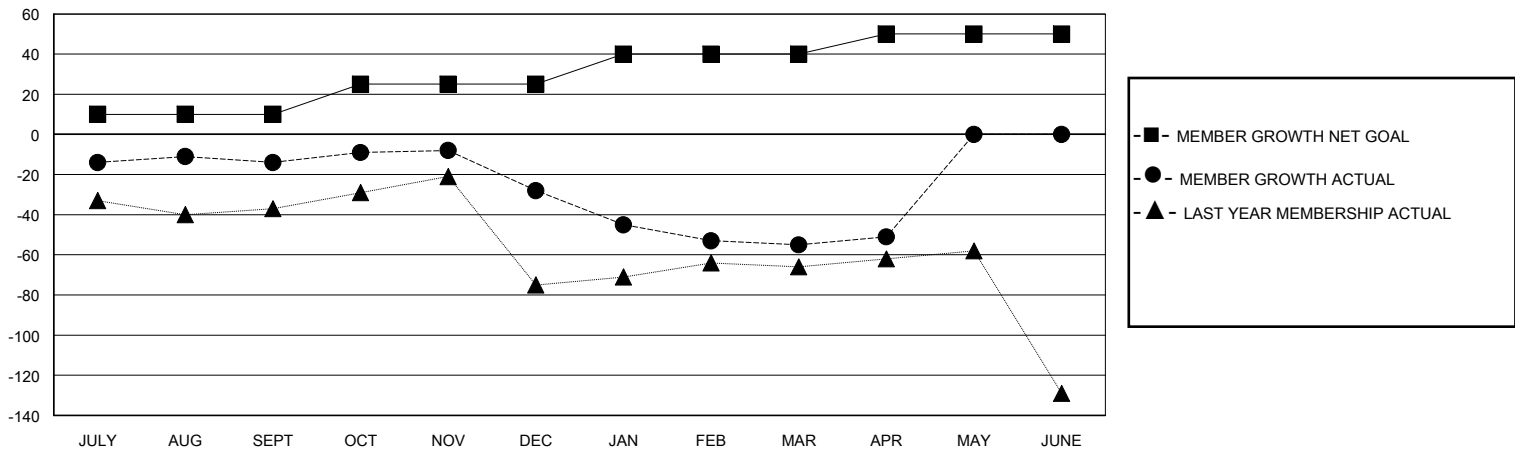
Clubs			
RESULTS FOR 2023-2024			
QUARTER	NEW CLUB GOAL	NEW CLUBS	DROPPED CLUBS
JULY/AUG/SEPT	0	0	0
OCT/NOV/DEC	1	0	2
JAN/FEB/MAR	0	0	0
APR/MAY/JUNE	0	0	0

Members			
RESULTS FOR 2023-2024			
QUARTER	MEMBER GROWTH NET GOAL	MEMBER GROWTH ACTUAL	DROPPED MEMBERS ACTUAL (including transfers)
JULY/AUG/SEPT	10	58	58
OCT/NOV/DEC	15	44	45
JAN/FEB/MAR	15	41	66
APR/MAY/JUNE	10	11	7

GOALS AND ACTUAL NEW CLUBS CUMULATIVE



GOALS AND ACTUAL MEMBERS CUMULATIVE



DROPPED CLUBS: 2	36 CLUBS OF 60 ADDED 1 OR MORE NEW MEMBERS	GENDER DISTRIBUTION MALE 954 (61.47%) FEMALE 598 (38.53%)
DROPPED MEMBERS DECEASED 31 CLUB CANCELLED 11 OTHER 134 TOTAL 176	CLICK HERE FOR CUMULATIVE MEMBERSHIP DATA	TOTAL FAMILY UNIT MEMBERS 341 FAMILY MEMBERS PAYING HALF DUES 173